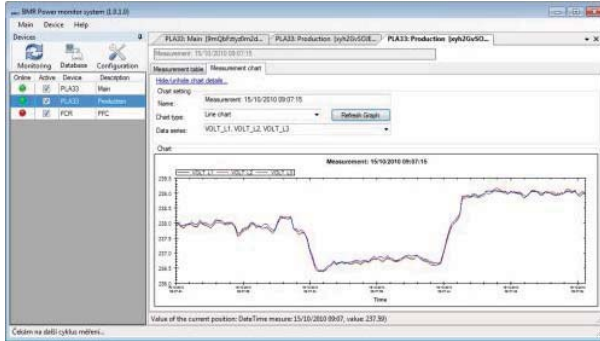


PMS power monitoring software

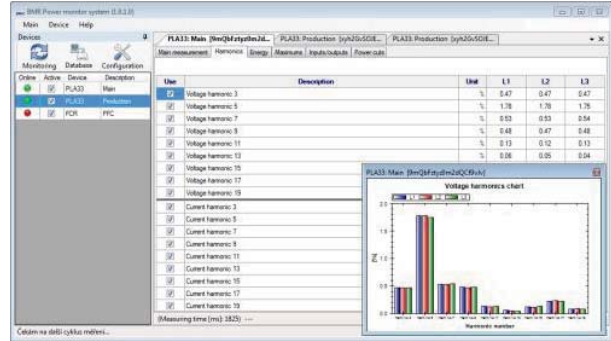
Power Monitoring Software is designed for remote control and management of BMR devices with communication interface. So far it offers drivers for power factor controllers and power line analysers. PMS can be installed on the computers with operating systems MS Windows Xp, MS Vista and MS Windows 7.

Structure of PMS is based on server part which manages communication with devices, data recording to SQL database and communication port manipulation. Client part is used for user access to the device to display real-time measured values, graphs and tables of recorded values and configuration of measuring devices. Client - server communication is based on TCP/IP protocol, therefore the client and server can be installed on different computers at different locations.

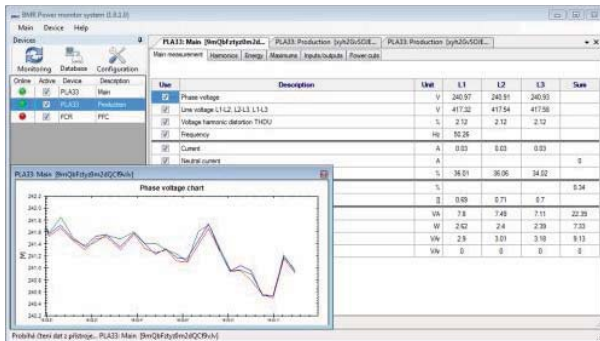
PMS is a life and open project which aims to meet the requirements of specific project needs like for example local language interface etc.



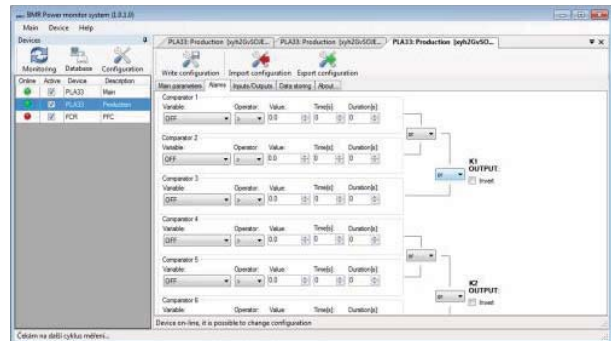
Voltage curve of measurement recorded to PLA33CM flash memory



On-line monitoring of particular voltage harmonics



On-line monitoring of main parameters



Alarm configuration of PLA33C